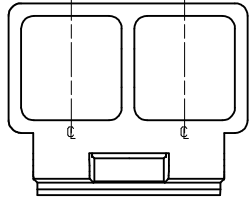


.295±.006
(7.49±0.15)



NOTES:

1) MATERIAL

A: NYLON 66, UL94V-2, COLOR: (SEE CHART).

B: NYLON 66, UL94V-0, COLOR: (SEE CHART).

C: NYLON 66, UL94V-0, COLOR (SEE CHART).

D: NYLON, UL94V-2, COLOR: BLACK, IEC 60335-1 GLOW WIRE CAPABLE.

2) FINISH: NONE

3) PRODUCT SPECIFICATION: SEE PSX-43335-9999 FOR APPLICABLE SPECIFICATIONS.

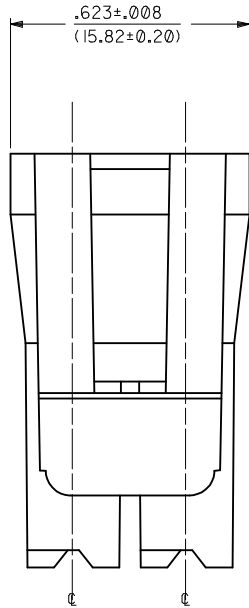
4) PACKAGING INFORMATION: PER PK-43335-001.

5) THIS CONNECTOR HOUSING WILL MATE TO A-43160-***2, 43180-***2 AND 43680-***2 HOUSINGS.

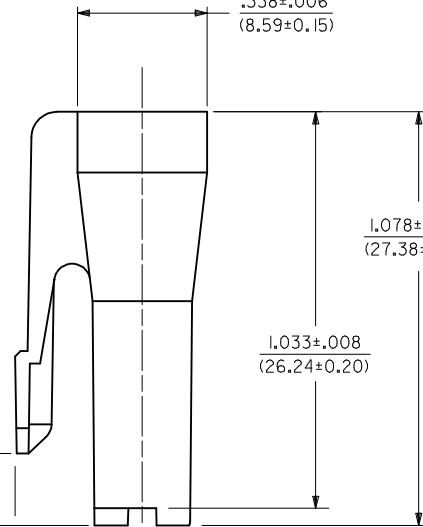
6) THIS CONNECTOR HOUSING FOR USE WITH 43375-**** TERMINALS.

ITEM NUMBER	MATERIAL (SEE NOTE 1)	COLOR
43335-1002	A	NATURAL
43335-2002	B	BLACK
43335-3002	A	RED
43335-4002	A	BLUE
43335-5002	C	NATURAL
43335-7002	D	BLACK

.623±.008
(15.82±0.20)



.338±.006
(8.59±0.15)

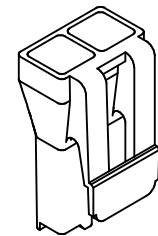


1.078±.010
(27.38±0.25)

1.033±.008
(26.24±0.20)

.188±.010
(4.78±0.25)

.327±.020
(8.31±0.51)



43335-*002
(SCALE 2:1)

ADD-7002 PN EC NO: UCP2014-2026 DRWNGES 2013/11/07 CHKD: BANDERSON 2013/11/11 APPR: FSMITH 2014/04/17 G	QUALITY SYMBOLS 	GENERAL TOLERANCES (UNLESS SPECIFIED)		DIMENSION STYLE IN/MM		SCALE 1:1	DESIGN UNITS INCH	THIRD ANGLE PROJECTION		
		4 PLACES ± --- ± ---	3 PLACES ± --- ± ---	2 PLACES ± --- ± ---	1 PLACE ± --- ± ---	0 PLACE ± ±	DRAWN BY MAB		DATE 08-15-95	TITLE 2-CIR RECEPTACLE HOUSING .125/(3.18)X .020/(0.51) FLAT BLADE SYS. - T.P.A. molex DOCUMENT NO. SD-43335-*002
		ANGULAR ±1/2°					APPROVED BY RAS		DATE 08-15-95	
		DRAFT WHERE APPLICABLE MUST REMAIN WITHIN DIMENSIONS					MATERIAL NO. SEE CHART		SHEET NO. 1 OF 1	
THIS DRAWING CONTAINS INFORMATION THAT IS PROPRIETARY TO MOLEX INCORPORATED AND SHOULD NOT BE USED WITHOUT WRITTEN PERMISSION										