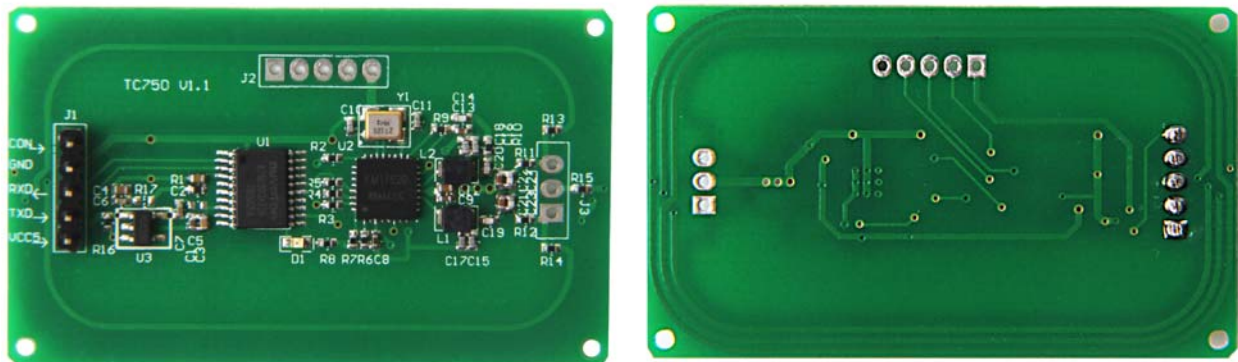


13.56Mhz RFID Module (Embedded PCB Antenna)

SKU 113990436



Description

This module are contactless smart card read module developed on the basis of the ISO/IEC14443A/B(-1,-2,-3,-4) international standard protocols. Provides the underlying.

Features

- Support ISO14443A/B

Application

- Access control
- online banking
- shopping online
- e-wallet recharge and balance enquiry
- internet security
- software locking
- digital signature
- customer bonus point preferential plan
- stored value、 social insurance、 ticket business、 bank、 tax administration、 industry and commerce、 telecommunications、 postal service、 computer security management

Technical Details

| | |
|------------------|---------------------|
| Dimensions | 50mm x 30mm x 2.8mm |
| Weight | G.W 50g |
| Battery | Exclude |
| Parameter | |
| Standard | ISO/IEC 14443-A/B |

| | |
|-----------------------|---|
| Supporting Card | Mifare S50/S70/Ultralight/FM1208 etc |
| Interface | TTL |
| PowerSupply | DC5V(DC3.6v-DC5.5v) |
| DC5V(DC3.6v-DC5.5v) | >5cm (Depending on label size) |
| Baud Rate | 9600-115200bit/s(Configurable , default 9600) |
| Operating Temperature | -10°C ~ 70°C |
| Sheathing Material | ABS |

Part List

| | |
|-------------|---|
| RFID reader | 1 |
|-------------|---|

